

# Clarke<sup>®</sup> **METALWORKER**



## MINI ROTARY SHEARS MODEL NO: CMRS1

PART NO: 1700272

## USER INSTRUCTIONS

---

# INTRODUCTION

---

Thank you for purchasing this CLARKE Rotary Shear. Once mounted onto a bench or into a vice, the long handle enables controlled movement of the wheel to cut straight, curved and internal corners. Ideal for forming car body parts.

These rotary shears are suitable for cutting sheet metal up to the size stated in the Specifications.

Before attempting to use this product, please read this manual thoroughly and follow the instructions carefully.

In doing so you will ensure the safety of yourself and that of others around you and you can look forward to your purchase giving you long and satisfactory service.

---

## SPECIFICATIONS

---

Model	CMRS1
Part number	1700272
Dimensions (H x W x L)	120 x 80 x 310 mm
Weight	2.35 kg
Shearing Capacity - Sheet	1.5 mm/16g
Handle length	300 mm
Fixing bolt hole size	10 mm

---

## GUARANTEE

---

This product is guaranteed against faulty manufacture for a period of 12 months from the date of purchase. Please keep your receipt which will be required as proof of purchase.

This guarantee is invalid if the product is found to have been abused or tampered with in any way, or not used for the purpose for which it was intended.

Faulty goods should be returned to their place of purchase, no product can be returned to us without prior permission.

This guarantee does not effect your statutory rights.






# SAFETY PRECAUTIONS

As with all tools and workshop equipment, it is necessary to exercise caution when they are put to use. Be aware of the inherent dangers associated with their use.

1. **ALWAYS** wear suitable safety glasses when using the metal shears to guard against the possibility of damage from flying offcuts.
2. The metal shears are only designed for cutting low carbon (mild) steel or aluminium. The attempted cutting of tool steels, high carbon or alloy steels will damage the cutting rollers.
3. **ALWAYS** keep the cutting rollers sharp and free from burrs or other damage.
4. **DO NOT** use an extension to the handle. If hand leverage cannot cut the metal, then the workpiece is either too thick or it is of the wrong material.
5. **ALWAYS** leave adequate working space around the shear for safer and convenient operation.
6. **NEVER** attempt to cut materials which exceed the thickness stated in the specification.
7. **ALWAYS** use the full length of the handle to increase the cutting force.
8. **ALWAYS** keep fingers well away from the cutting rollers during operation.

## SAFETY SYMBOLS ASSOCIATED WITH THIS PRODUCT

Please read all of the safety and operating instructions carefully before using this product. The following safety symbols may be found on the product.

	Always read the manual before use		Wear hand protection
	Wear eye protection		Do not exceed the rated cutting capacity of the shear.
	Keep fingers clear of blade		

---

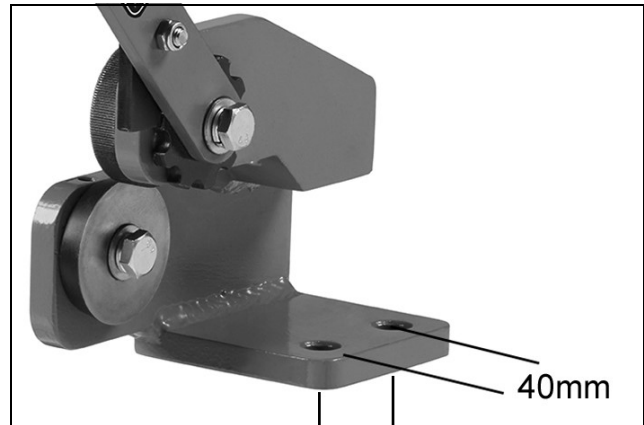
## MOUNTING

---

These shears must be firmly secured to a firm and level bench using suitable 10 mm bolts. (not supplied)

The shears are pre-adjusted at the factory and are ready to use.

1. Mount the shears on a sturdy workbench at a height which allows easy operation, taking into account the nature of the work.
- 2 x 10 mm bolts will be required (not supplied), suitable for mounting to the chosen bench. Holes will need to be drilled at the positions shown.

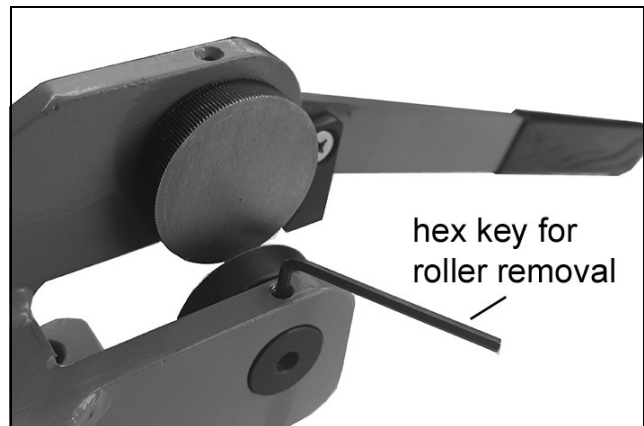


---

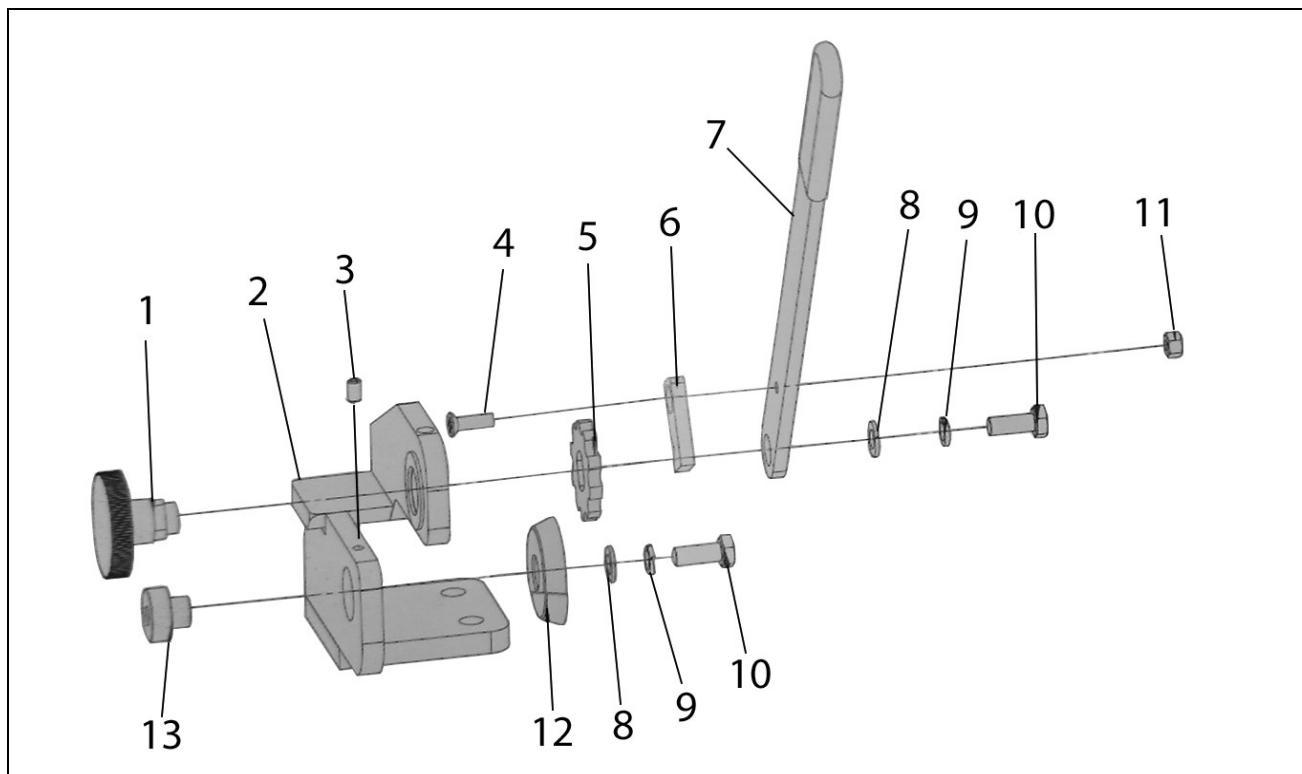
## OPERATION & CARE

---

1. Check that the rollers are seated correctly and are fixed securely.
  2. Position the material to be cut between the cutting rollers and pull the handle downwards to cut the desired length, holding the cut material firmly.
  3. Occasionally oil the moving parts.
  4. Periodically check that all bolts and nuts are tight.
- A hex key is supplied for unfastening the grub-screw securing the cutting roller.
  - Spare cutting rollers are available from your CLARKE dealer.



## COMPONENT PARTS



No	Item
1	Knurled cutting Roller
2	Stand
3	Holding grub-screw
4	Screw
5	Drive disc
6	Reversible pawl
7	Handle

No	Item
8	Flat washer
9	Ring
10	Bolt
11	Nut
12	Cutting blade roller
13	Bushing

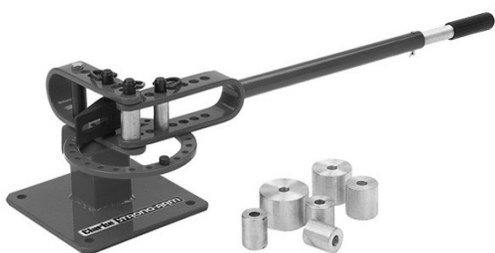
- Replacement rollers are available from your Clarke dealer.

## ENVIRONMENTAL PROTECTION

If disposing of damaged components or scrap metal, do not dispose of with general waste. These products contains valuable raw materials. Metal products and scrap should be taken to your local civic amenity site for the recycling of metal products.

## OTHER PRODUCTS FROM THE CLARKE METAL- WORKER RANGE INCLUDE

### Metal Part Benders



Compact benders, ideal for creating metal components using round or square section

### Metal Folder



For fast, accurate sheet metal folding, designed to be held in a standard bench vice.

### Engineering Drill Presses



Available for the hobbyist or professional. Ideal for fast, accurate drilling of metal and plastic. Choose from bench or floor mounted.

### Bench Grinders



DIY, professional & heavy duty bench grinders, ideal for grinding garden and workshop tools and general metalworking

# A SELECTION FROM THE VAST RANGE OF

# Clarke®

## QUALITY PRODUCTS



### AIR COMPRESSORS

From DIY to industrial, Plus air tools, spray guns and accessories.

### GENERATORS

Prime duty or emergency standby for business, home and leisure.

### POWER WASHERS

Hot and cold, electric and engine driven - we have what you need

### WELDERS

Mig, Arc, Tig and Spot. From DIY to auto/industrial.

### METALWORKING

Drills, grinders and saws for DIY and professional use.

### WOODWORKING

Saws, sanders, lathes, mortisers and dust extraction.

### HYDRAULICS

Cranes, body repair kits, transmission jacks for all types of workshop use.

### WATER PUMPS

Submersible, electric and engine driven for DIY, agriculture and industry.

### POWER TOOLS

Angle grinders, cordless drill sets, saws and sanders.

### STARTERS/CHARGERS

All sizes for car and commercial use.



## PARTS & SERVICE:

## 0208 988 7400

### Parts Enquiries

[Parts@clarkeinternational.com](mailto:Parts@clarkeinternational.com)

### Servicing & Technical Enquiries

[Service@clarkeinternational.com](mailto:Service@clarkeinternational.com)

SALES: UK 01992 565333 or Export 00 44 (0)1992 565335

**Clarke®** INTERNATIONAL Hemnall Street, Epping, Essex CM16 4LG  
[www.clarkeinternational.com](http://www.clarkeinternational.com)